

# The Centre for Environment, Fisheries and Aquaculture Science

([www.cefas.co.uk](http://www.cefas.co.uk))

Dave Limpenny – Vessel & Seabed Mapping Business Manager  
([david.limpenny@cefas.co.uk](mailto:david.limpenny@cefas.co.uk))



- Cefas

- UK Government's (primarily Defra) foremost source of marine evidence and applied science
- Established over 100 years
- 480 scientific, technical and support staff
- Two UK laboratories + 73m research vessel (*Cefas Endeavour*)
- Projects in more than 40 countries
- >160 peer reviewed papers each year
- Working for non-UK Governments and private sector clients



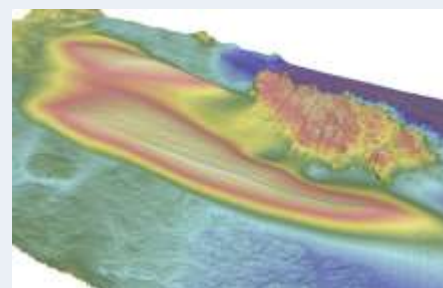
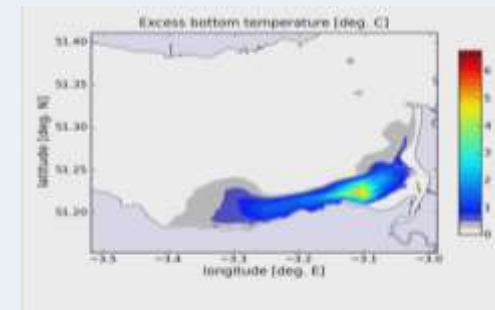
- Me

- Man and boy! 36 years at Cefas
- Laboratory analyst
- Scientific survey manager
- Project manager: seabed mapping
- National MPA programme manager
- Vessel and seabed mapping business manager



# Our primary scientific capabilities

- Fisheries and fish stocks
- Aquaculture and fish health
- Marine monitoring
- Analytical services
- Oceanography
- Seabed mapping
- Modelling
- Emergency response
- Marine spatial planning
- Regulatory advice
- Socio-economics
- Climate change



# Who we work with

- A wide range of UK government departments and agencies, including Defra and DECC, Natural Resources Wales, Scotland, Northern Ireland.
- International governments and institutions, with a growing emphasis on the Middle East, Caribbean and Far East.
- Industries across a range of sectors including offshore renewable energy, nuclear new-builds, oil and gas emergency response, ports and harbours, marine surveying, fishing and aquaculture.
- Other scientists from UK and European academic institutions and research laboratories.



# Cefas Endeavour

## Specification

- Launched - 2003
- L - 73.00 m, B 15.8m, D - 8.2m
- Maximum Complement – 35 (17 scientific berths)
- Bow and stern thrusters = DP0
- Winches - Suite of fishing and survey winches
- Side and stern gantries
- Drop keel
  - EM 2040 + MRU
  - Fisheries sounders
- Multidisciplinary
- Management contract – P&O Maritime Services

## Utilisation

- Aim for 285 days at sea (max 300)
- Annual programme - flexible
- ~50/50 Fisheries/Environmental (e.g. mapping/metocean etc)
- 228 – 240 days nominally assigned to Defra



# Broader geographical remit

- Ongoing UK Gov funding/support for UK Overseas Territories (OTs), Commonwealth countries, Small Island Developing States
- Initial OT 'Blue Belt' focus on BIOT, Pitcairn, Ascension, St Helena, Tristan da Cunha, South Georgia and South Sandwich Islands
- Working with UK Hydrographic Office, National Oceanographic Centre in Caribbean
- Brexit – looking further afield
- Vessel is UK based and enough work here (at the moment)
- Potentially requires global vessel services
- Building Gov to Gov relationships for vessels, ++



# Vessel - Landscape and Cefas' future vessel strategy

- Vessel 13 years old
- Declining Gov budgets suggest reduced demand
- Vessel management contract ends in March 2019
  - Crew/maintenance/mechanical risk/insurance
  - Key decision point
- Seek long-term (5+ yrs) UK/EU partner:
  - Exploring opportunities 14/15 onwards
  - Initial focus on UK/EU Gov organisations
  - Initiate partnership by FY 18/19
  - 100 – 140 day commitment by 2019/20
- All options considered



# Options

1. No change – continued independent ownership with effective delivery of Cefas customer needs
2. Continued ownership with collaboration with other operators:
  - a) Integrated planning & vessel management
  - b) Fleet delivery model
  - c) Integrated science programme
3. Sell & lease back
4. Sell and meet programme needs through multiple third party platforms





# Vessel programme for 16/17

Version 12	1	2	3	4	5	6	7	8	9	10	11	12	13	14	15	16	17	18	19	20	21	22	23	24	25	26	27	28	29	30	31	
January																	C End 1/16X										C End 2/16					
February			C End 3/16 Smart buoy																													
March																																
April																																
May																																
June																																
July																																
August																																
September																																
October																																
November																																
December																																
January																																
February																																
March																																

Crew change
  Firm
  Only Possible
  Maintenance

Transit
  External visit
  Vessel Audit
  External Visit/Crew Change

# Vessel programme – 17/18

Version 1	1	2	3	4	5	6	7	8	9	10	11	12	13	14	15	16	17	18	19	20	21	22	23	24	25	26	27	28	29	30	31
January		Possible gap																Possible survey													
February	Possible survey							Possible survey																							
March	Possible survey																														
April	C End 4/17			Maintenance																											
May				C End 7/17 (RF)																											
June																															
July																															
August																															
September																															
October																															
November																															
December																															
January																															
February																															
March																															